

PREPRUFE[®] Plus Technical Bulletin

Proven Long Term Lateral Water Migration Resistance and Adhesion to Concrete

It is critical that waterproofing membranes perform not only during construction but throughout the life of the structure.

Standard testing of hydrostatic pressure resistance of a waterproofing membrane is based on ASTM D 5385 which tests a fresh specimen, with no water immersion or aging, at water pressure up to 231 ft (100 psi). However, below grade waterproofing needs to maintain an intimate bond to concrete and prevent lateral water migration after constant exposure to water, a result of groundwater in the soil, throughout the life of the structure. Standard bond to concrete and hydrostatic tests may not represent the real-life situation a waterproofing membrane must withstand to be effective.

Several decades ago, GCP modified the ASTM D 5385 test method to test the hydrostatic pressure resistance performance of a pre-applied waterproofing membrane with a breach in the membrane. This test method has become an industry standard and is called the 'Lateral Water Migration Resistance' test.

Lateral Water Migration Resistance

Lateral Water Migration Resistance (LWMR) is the ability of a pre-applied waterproofing membrane system to prevent/restrict the passage of water between the waterproofing membrane and structural concrete in the event of a breach. For this to be achieved, membrane must be intimately and continuously bonded to the structural concrete slab.

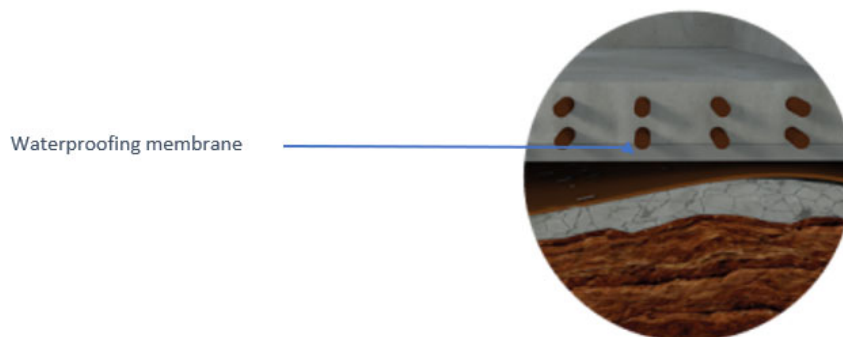


Figure 1. Illustration of a bonded membrane

Why Lateral Water Migration Resistance is important?

If a waterproofing membrane without this performance characteristic is punctured or improperly installed, water which bypasses the membrane would not be confined to the breached location. Under hydrostatic pressure, this water can migrate between the waterproofing membrane and the structure (Figure 2 & 3). Once water has entered the structure, migration around and within concrete can result in significant leaks, the source for which is difficult to find. Repair and remediation of such circumstances is expensive, often requiring continuous grouting and/or costly alternatives. .

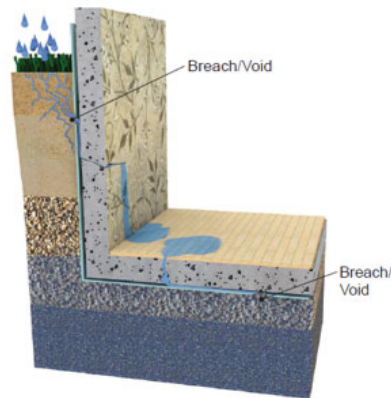


Figure 2. Illustration of lateral water migration between membrane and concrete

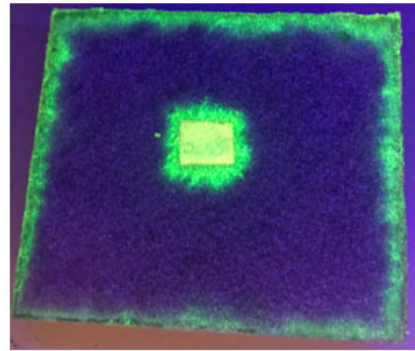


Figure 3. Lateral water migration, tested using a fluorescence dye immersion method

The LWMR of a waterproofing membrane can be correlated directly to the technology used to provide bond to concrete performance. All bonded membranes are not equal in this respect and a closer examination of the bond mechanism is needed.

The PREPRUFE[®] membrane adhesive interacts with the proprietary protective coating to form an intimate adhesive bond with the concrete cast against the membrane. (see Figure 4 & 5). If a breach occurs in the membrane, the adhesive prevents water under hydrostatic pressure from migrating between the membrane and the concrete, limiting the risk of waterproofing failure. This bond is continuous and was developed to provide lasting performance. Independent testing shows the PREPRUFE[®] waterproofing membrane can resist lateral water migration at 231 feet of hydrostatic pressure even after long term immersion in water.

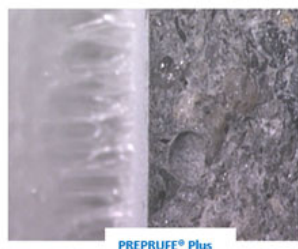


Figure 4. Continuous Adhesive Bond between PREPRUFE® Plus and concrete

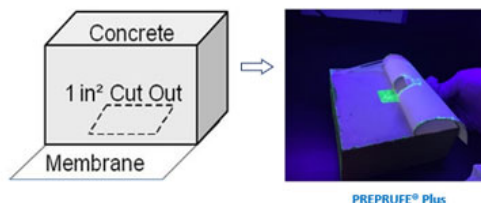


Figure 5. Lateral water migration, tested using a fluorescence dye immersion method

PREPRUFE® LWMR Testing

Given the design life of most modern structures, it is vital that the bond to concrete technology can withstand subgrade conditions throughout an extended period. During 2003 to 2006 The French Tunneling and Underground Space Association, AFTES (L'Association Française des Tunnels et de l'Espace Souterrain), a globally recognized independent testing body, carried out a lateral water migration test based on modified ASTM D 5385 of the PREPRUFE® 300R membrane immersed under water for a period of three years at a test pressure of 700 kPa (231 feet of hydrostatic head pressure) to verify its LWMR properties. At the end of the three-year test period, AFTES certified that no leaks or tearing of the PREPRUFE® 300R membrane were observed on the 21 samples tested after continuous exposure to water.

From 2019–2022, after the addition of the ZipLap™ and removing the release liner, enhancing ease and speed of installation, the same AFTES test was repeated on PREPRUFE® 300R Plus waterproofing membrane. Testing was prepared and conducted under the supervision of representative from KIWA BDA testing lab from Gorinchem (Netherlands). KIWA BDA is a globally recognized testing, inspection & certification institute of the building envelope (<https://www.kiwa.com/us/en/markets/building-materials/>). Representative of KIWA BDA was present during sample preparation and scheduled periodical water pressure tests.

PREPRUFE® 300R Plus test samples were created by casting the concrete over membrane and creating a breach in the membrane representing a puncture which could occur in real site condition (Figure 6). These samples were immersed in water in a container and stored safely. The water level was maintained and controlled.

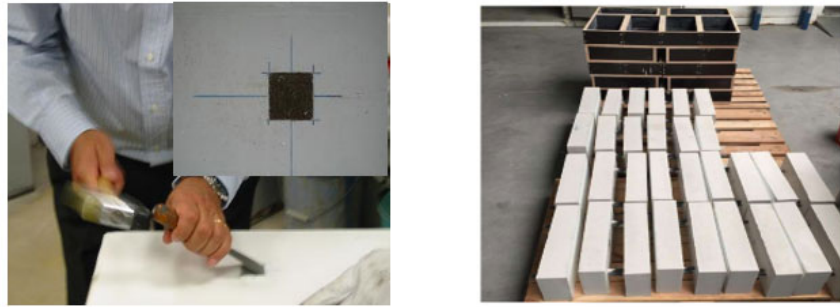


Figure 6. Lateral water migration test sample preparation, creating a breach in the membrane

Three PREPRUFE[®] Plus samples were tested at the end of each 1, 6, 12, 18, 24, 30, 36 and 48 months, as per AFTES modified ASTM D 5385. No water leaks were observed. Each PREPRUFE[®] Plus sample remained bonded around the breach. Lateral water migration was not able to occur due to the PREPRUFE[®] bond to concrete technology.

Additionally, each water immersed samples were tested for ‘Peel Adhesion to Concrete as per ASTM D 903’. PREPRUFE[®] Plus adhesion to concrete was found to be consistently more than its published value throughout the test duration attesting PREPRUFE[®] Plus long-term adhesion.

After successful testing of PREPRUFE[®] 300R Plus, at the end of the third year, KIWA BDA issued the ‘Final Witness Report ref: 0140-L-19/3 REV 01’. A copy of this third-party report is available upon request, contact your local GCP representative.

Summary of the pressure & adhesion test conducted on PREPRUFE[®] 300R Plus:

Date of testing (MM-DD-YYYY)	Time in water	44 psi (300 kPa)	73 psi (500 kPa)	100 psi (700 kPa)	Peel adhesion to concrete (ASTM D 903 mod)
7-25-2019	0	PASS	PASS	PASS	Not tested
8-27-2019	28 days	PASS	PASS	PASS	Not tested
1-23-2020	6 months	PASS	PASS	PASS	Not tested
7-30-2021	12 months	PASS	PASS	PASS	> 10 lbs/in. (1760 N/m)
1-26-2021	18 months	PASS	PASS	PASS	> 10 lbs/in. (1760 N/m)
8-24-2021	24 months	PASS	PASS	PASS	> 10 lbs/in. (1760 N/m)
2-1-2022	30 months	PASS	PASS	PASS	> 10 lbs/in. (1760 N/m)
8-9-2022	36 months	PASS	PASS	PASS	> 10 lbs/in. (1760 N/m)
6-21-2023	47 months	PASS	PASS	PASS	> 10 lbs/in. (1760 N/m)

PREPRUFE[®] Adhesion Testing

In addition to LWMR evaluation, GCP has conducted several adhesion studies on PREPRUFE[®] under different environmental conditions, such as BTEX solution and high pH environment sample immersion, which shows no significant change in the bond strength. The environmental conditions used in this study to evaluate long term impact on performance represent the worst-case scenarios and are highly unlikely to occur. In practice, the concrete substrate will not contact groundwater unless the PREPRUFE[®] membrane was mechanically damaged and perforated before the concrete was cast. However, these immersion test results show that even under a worst-case scenario, the membrane continues to adhere strongly to concrete. The LWMR studies reinforce results from the adhesion studies to support the waterproofing integrity of the bonded system.

Summary:

The standard ASTM D 5385 test is conducted for a maximum of seven hours and on a fresh sample. PREPRUFE[®] Plus has been tested in more stringent, real-life conditions.

Both LWMR and Adhesion data indicate that PREPRUFE[®] membranes will continue to exceed GCP published performance data and provide an effective barrier to water ingress and water migration over extended periods of time, as required for the stability of the built foundation.

ca.gcpat.com | North America customer service: 1-877-4AD-MIX (1-877-423-6491)

We hope the information here will be helpful. It is based on data and knowledge considered to be true and accurate, and is offered for consideration, investigation and verification by the user, but we do not warrant the results to be obtained. Please read all statements, recommendations, and suggestions in conjunction with our conditions of sale, which apply to all goods supplied by us. No statement, recommendation, or suggestion is intended for any use that would infringe any patent, copyright, or other third party right.

PREPRUFE is a trademark, which may be registered in the United States and/or other countries, of GCP Applied Technologies Inc. This trademark list has been compiled using available published information as of the publication date and may not accurately reflect current trademark ownership or status.

© Copyright 2023 GCP Applied Technologies Inc. All rights reserved.

GCP Applied Technologies, 20 Moores Road, Malvern, PA 19355, USA.

GCP Canada, Inc., 294 Clements Road, West, Ajax, Ontario, Canada L1S 3C6.

This document is only current as of the last updated date stated below and is valid only for use in the Canada. It is important that you always refer to the currently available information at the URL below to provide the most current product information at the time of use. Additional literature such as Contractor Manuals, Technical Bulletins, Detail Drawings and detailing recommendations and other relevant documents are also available on www.gcpat.com. Information found on other websites must not be relied upon, as they may not be up-to-date or applicable to the conditions in your location and we do not accept any responsibility for their content. If there are any conflicts or if you need more information, please contact GCP Customer Service.

Last Updated: 2026-03-20

ca.gcpat.com/solutions/products/preprufe-plus-technical-bulletin