



Dry-Block System

ALDER CREEK MIDDLE SCHOOL

Proven protection for moisture control in masonry construction

How Does It Work?

The DRY-BLOCK® System has been successfully used in thousands of concrete masonry structures to provide unsurpassed moisture control. It is the leading integral water repellent system on the market to address moisture penetration of CMU (concrete masonry units) and mortar. The DRY-BLOCK System consists of two separate admixtures. DRY-BLOCK Block Admixture is mixed throughout the concrete during manufacture of the CMU and DRY-BLOCK Mortar Admixture is added to the mortar. During the curing process, the admixtures within the CMU and mortar become an integral part of the cement matrix. They become locked into the CMU and mortar providing long lasting resistance to water penetration.

Because the admixtures are present throughout the CMU and mortar, any water that comes in contact with the exterior of the wall system is prevented from wicking through the CMU and mortar. While the DRY-BLOCK System prevents the wicking of water in the CMU and mortar, it still allows the wall system to “breathe”. DRY-BLOCK’s unique admixtures minimize the migration of moisture that can carry soluble salts to the surface and cause unsightly efflorescence.

The DRY-BLOCK System is only one part of a moisture protection system for concrete masonry walls.

Other elements include:

- Proper drainage within the core or cavity area
- Properly located and installed flashing and weeps
- Properly spaced control joints
- Properly tooled mortar joints

Advantages

DRY-BLOCK Block Admixture provides improved machinability. Improved machinability means the mix flows easily into the CMU mold during production to provide a more uniform surface finish with greater resistance to moisture penetration. DRY-BLOCK Mortar Admixture’s unique formulation improves workability and hardened mortar properties including bond strength.

Better Protection at a Lower Cost

The DRY-BLOCK System is less expensive than surface applied sealers and is complete when the wall is built. Surface sealers work only to the depth that they can penetrate. Should water pass through cracks in the wall surface, moisture may wick through to the building interior to cause damage. The DRY-BLOCK System is present throughout the entire CMU and mortar joint providing full depth protection. Unlike sealers, the DRY-BLOCK System requires no reapplication and is virtually maintenance free.



DRY-BLOCK and INFINISEAL™ DB

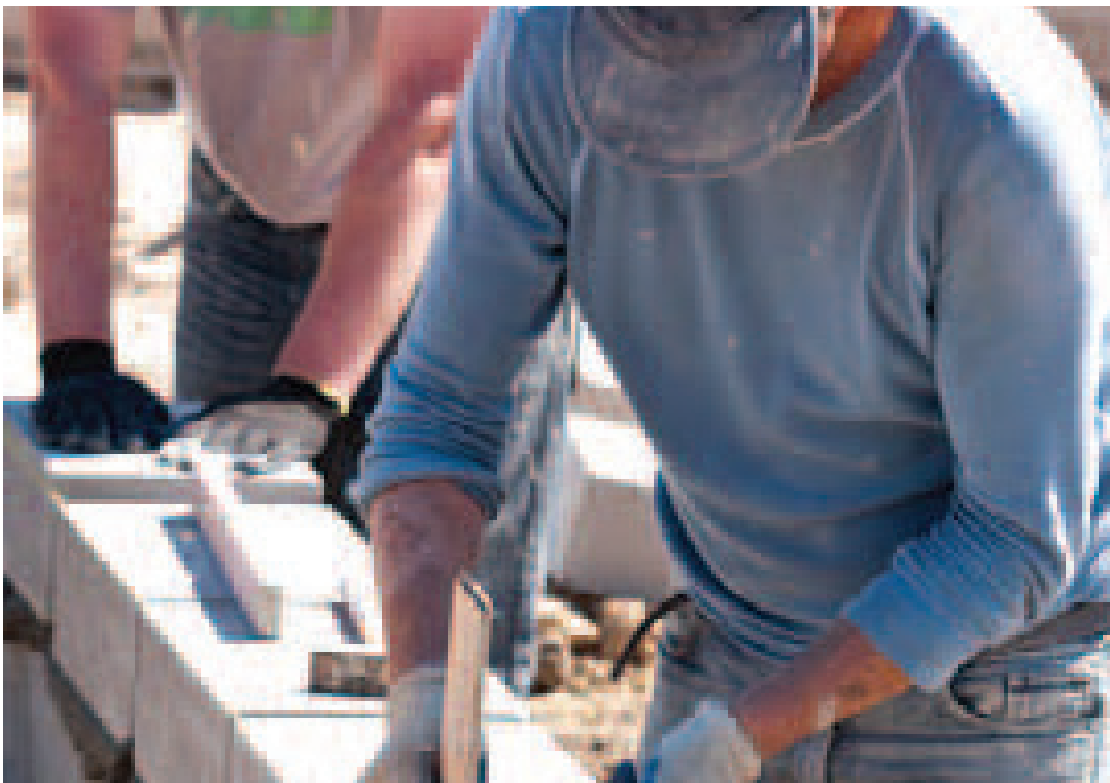
DRY-BLOCK Block and Mortar admixtures have successfully performed as a standalone system for years. But, if a “belt and suspenders” system is desired, then field apply INFINISEAL™ DB Sealer, a water-based, clear, penetrating water-repellent sealer to the exterior of the wall. INFINISEAL DB complements DRY-BLOCK admixtures and provides maximum protection to the masonry wall. INFINISEAL DB has been specially formulated to work with both new and existing DRY-BLOCK structures.

Proven Protection

There are other integral water repellents admixtures on the market, but none come close to enjoying the successful track record of the DRY-BLOCK System. DRY BLOCK has been chosen for use in the buildings of many nationally known companies including: 7 Eleven, Barnes & Noble, Blockbuster Video, Builders Square, Burger King, Cellular One, CompUSA, Costco, General Cinema, Home Depot, Lowe’s, Macy’s, McDonald’s, Nevada Bob’s, Pep Boys, Price Chopper, Saturn Auto, Sears, Shop-N-Save, Shop Rite, Showcase Cinemas, Target, Wal-Mart and Whole Foods. Don’t settle for anything less. Specify DRY-BLOCK by name!

Laboratory Tested

The NCMA’s (National Concrete Masonry Association.) Research and Development Laboratory and other independent testing laboratories have evaluated the DRY-BLOCK System for compliance with applicable standards for CMU, masonry mortars and masonry assemblages, including Masonry Bond Strength, Grout Bond and Water Vapor Transmission. In testing, the DRY-BLOCK System achieved a Class E rating when evaluated for wind-driven rain resistance, using ASTM E 514 with the test extended to 72 hours, and using the rating criteria in ASTM E 514-74.

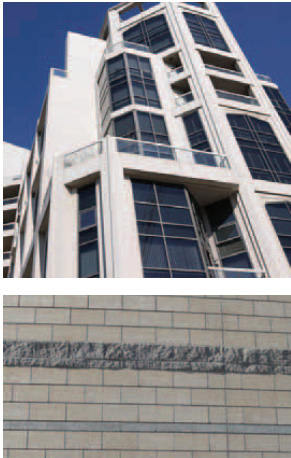


The Unique, Qualified DRY-BLOCK Producers Program

Does Just Adding An Admixture Make a Water-Repellent Block? We believe that making a water-repellent CMU takes more than simply adding an admixture. Every plant has different aggregates, mix designs and manufacturing conditions. It is not prudent to expect one admixture dosage rate to work under all of these variables. We work with our Qualified DRY-BLOCK Producers to help ensure that they can produce a quality water-repellent CMU when they use DRY-BLOCK. Becoming a Qualified DRY-BLOCK Producer is a time consuming process that requires commitment on the part of the CMU manufacturer and GCP. We work with each producer, evaluating their mix designs and manufacturing process prior to testing. Production-sized batches are then produced with varying admixture dosage rates to determine the optimum addition rate. CMU from the production trials are then put through additional testing at an independent laboratory using industry accepted test methods to ensure they meet GCP's stringent performance criteria. Certificates of Qualification are issued to each plant successfully completing the process. Copies of the current Qualification Certificate should be requested when accepting the bid on a DRY-BLOCK System project. Qualification is reviewed annually and renewed when recently produced CMU successfully meet GCP's performance criteria.

DRY-BLOCK As Dampproofing

Specifying the DRY-BLOCK System in place of traditional dampproofing materials in cavity wall back-up applications assures reliable moisture protection, labor savings and a cost efficient installed wall. By using the DRY-BLOCK System in the CMU and mortar of the back-up wall, your moisture protection system is in place as the wall is built. There is no additional labor cost or job delays for an additional trade to complete the project. You are assured the proven performance of the DRY-BLOCK System is throughout the CMU and mortar.



gcpat.com | Customer Service: 1-877-423-6491

We hope the information here will be helpful. It is based on data and knowledge considered to be true and accurate, and is offered for consideration, investigation and verification by the user, but we do not warrant the results to be obtained. Please read all statements, recommendations, and suggestions in conjunction with our conditions of sale, which apply to all goods supplied by us. No statement, recommendation, or suggestion is intended for any use that would infringe any patent, copyright, or other third party right.

DRY-BLOCK and INFINISEAL are trademarks, which may be registered in the United States and/or other countries, of GCP Applied Technologies Inc. This trademark list has been compiled using available published information as of the publication date and may not accurately reflect current trademark ownership or status.

© Copyright 2016 GCP Applied Technologies Inc. All rights reserved.

GCP Applied Technologies Inc., 62 Whittemore Avenue, Cambridge, MA 02140 USA.

In Canada, GCP Canada, Inc., 294 Clements Road, West, Ajax, Ontario, Canada L1S 3C6.



gcp applied technologies