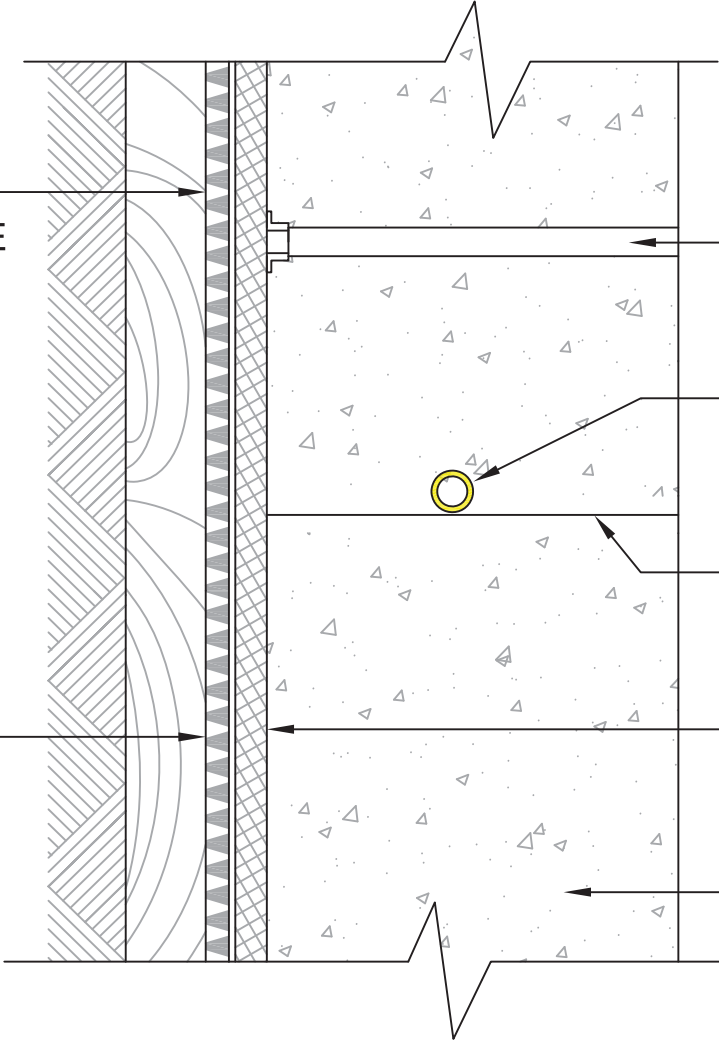


PLAN VIEW

HYDRODUCT®
DRAINAGE COMPOSITE
(SEE NOTE A)

SOIL RETENTION
SYSTEM



INJECTION PORT ASSEMBLY
(LOCATE AS SPECIFIED IN DATA SHEET)

DENEEF INJECTOTUBE®
(MIN. 3 in, 75 mm SHOTCRETE COVER -
SEE NOTE B)

CONSTRUCTION JOINT
(FORMED OR TOOLED SMOOTH TO
RECEIVE WATERSTOP)

PREPRUFE® SCS MEMBRANE

SHOTCRETE WALL

NOTES:

- A) IF HYDRODUCT IS USED AS PART OF THE DRAINAGE SYSTEM, 6 MIL, 1.5 mm POLY IS REQUIRED BETWEEN THE HYDRODUCT AND THE PREPRUFE SCS MEMBRANE
- B) GCP MAY REQUIRE AN ALTERNATE GCP INJECTABLE WATERSTOP BASED ON DESIGN CONDITIONS



VERTICAL WALL CONSTRUCTION JOINT - OPTION-B
PREPRUFE® SCS
WATERPROOFING SYSTEM FOR SHOTCRETE

DRAWING: SCS 019-B
SCALE: Not to scale
EFFECTIVE DATE: 08/01/2016
SUPERSEDES: NEW